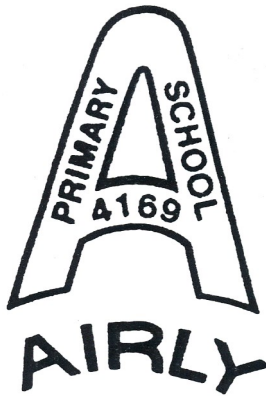


Aiming For Excellence In Education

Our School Values:

RESPECT
ATTITUDE
CO-OPERATION
ENVIRONMENT



NEWSLETTER NO. 29

October 7th, 2015

Airly Primary School.

Phone (03) 51498251

Fax (03) 51498253

Email: airly.ps@edumail.vic.gov.au

Website: www.airlyps.vic.edu.au

SCHOOL EVENTS - OCTOBER

THURSDAY 8TH

SWIMMING SESSION 1 AT AQUA ENERGY, SALE

SUNDAY 11TH

STRATFORD HISTORICAL SOCIETY'S HERITAGE FARM DAY

TUESDAY 13TH

M.A.R.C VAN VISIT

FRIDAY 16TH

**EXCURSION TO GIPPSLAND ART GALLERY &
SALE COLLEGE PERFORMANCE**

WELCOME TO TERM 4.

Miss Carter has been busy over the holidays moving the library books into West room. Students will now have better access to these resources. She has suggested using the Library as an Art Gallery. Please let us know your thoughts for this new 'space'.

We have a busy 11-week term ahead:

- Swimming lessons start this week and run for 8 weeks
- The Prep Orientation program will start on October 21 (5 day visits for 2016 Preps)
- Two incursions by Gippsland Water
- Music Count Us In – We will sing "Gold" on October 29 at 12:30pm.
- Concert practice

**Stratford Historical Society's
Heritage Farm Day**

THIS Sunday, October 11th our students are invited to attend the Stratford Historical Society's Heritage Farm day, at Pine Lodge Tennis complex, Stratford. Local schools will compete in traditional sports events (sack races, egg & spoons races, 3-legged races, etc) and students are encouraged to dress up in period costume. Airly PS will also host a stall on the day showing our school's history. Please let Mrs Talbot know if your family will be involved as we need to ensure we have a school team to compete.

Special Religious Instruction

Next year Religious Education is not to be held within school class times. Mrs Mavros has offered to run the SRI class during Friday lunchtimes. Please return the slip at the bottom of the newsletter regarding these lessons.

Working Bee

Thank you to all families who came to the working bee to finish off term 3. Many jobs were accomplished which will allow our school to remain 'spick & span' for the coming term.



Caine's Cardboard Challenge

Our students showed their creative talents at Wurruk PS with lots of cardboard and masking tape! It was also a terrific day for our students to 'catch up' with friends they have made on recent camps. Opal was interviewed by WIN News about the event.



Special Religious Education class may be held during Friday lunchtimes in 2016.

My child/ren _____ will / will not attend during their Friday lunchtime.

Signed _____ (parent)

Student Reporting Survey

- Most responses did not think the A-E rating scale was valuable
- Most responses liked all 4 comments sections on the current report
- All responses would like to see more Airly PS ACE values included
- All responses like the opportunity to talk to teachers whenever they like and the Individual Learning Plans

Walk to School Month

October is Walk to School Month. All students and staff have a tally sheet to record physical activity for the month of October. Please help your children to keep their records up to date.

Asthma

Our school has been recognised as an Asthma Friendly School for the next 3 years. This means staff has all been trained to treat students with asthma and we are mindful of the triggers that may induce asthma. All students who present with asthma MUST have an asthma plan, signed by their doctor.

Snakes

With warmer weather upon us students have been warned about the presence of snakes in our local school area. Our mower man saw one last week near the passionfruit vine.



Birthdays

Celebrating her Birthday on the weekend

Matilda 11th of October

Happy Birthday

TERM DATES FOR 2015

Term 4

October 5th to December 18th

TERM DATES FOR 2016

Term 1

January 28th (Students) to March 24th

Term 2

April 11 to June 24th

SCHOOL HOURS

School begins at 9.00am. Students don't need to be at school before 8.50am.

Morning recess is from 11.00 to 11.30am.

Lunch is from 1.00 to 1.45pm.

School finishes at 3.15pm.

MAFFRA AND DISTRICT AGRICULTURAL SOCIETY INC.

Presents

MAFFRA MILE

&

CHILDREN'S 100M FOOT RACES

Saturday 24 October 2015

Maffra Show Night Carnival

McLean Street, Maffra

**Maffra Mile
100m**

Men & Women Open \$10-
Primary School \$ 2-

Prizes:

Maffra Mile Men & Women 1st \$400, 2nd \$200, 3rd \$50 & Medals

Children's 100m Boys & Girls Medals 1st, 2nd, 3rd



Registration form available:

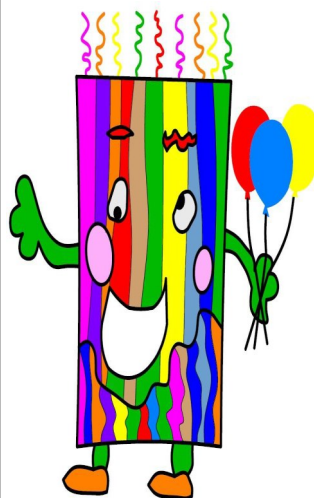
www.maffrashow.org.au

Wellington Athletic Club facebook

Newry General Store Ph:51451359

Register by the 12th October, 2015

* No late entries if fields are full



Marjo Jumping

Castles Gippsland

for that special Family Fun

Day,

School Fete,

School Term Break-Up,

Church Fair,

Kids Xmas Party, Birthday

Party,

Social Events, Festivals,

Sports Days,

Corporate Function,

Business Promotions &

Exhibitions,

Farmers Markets

Phone 0403030766

Gmail: marjojumpingcastlesgippsland@gmail.com

[https://www.facebook.com/](https://www.facebook.com/MarjoJumpingCastlesGippsland)

MarjoJumpingCastlesGippsland

To receive a **10% discount**

please be sure to mention this promotional flyer when booking a castle for your next party or event.

Offer ends November 2015

Regards

Brenda, Geri, Kerrie, Alison and Deb